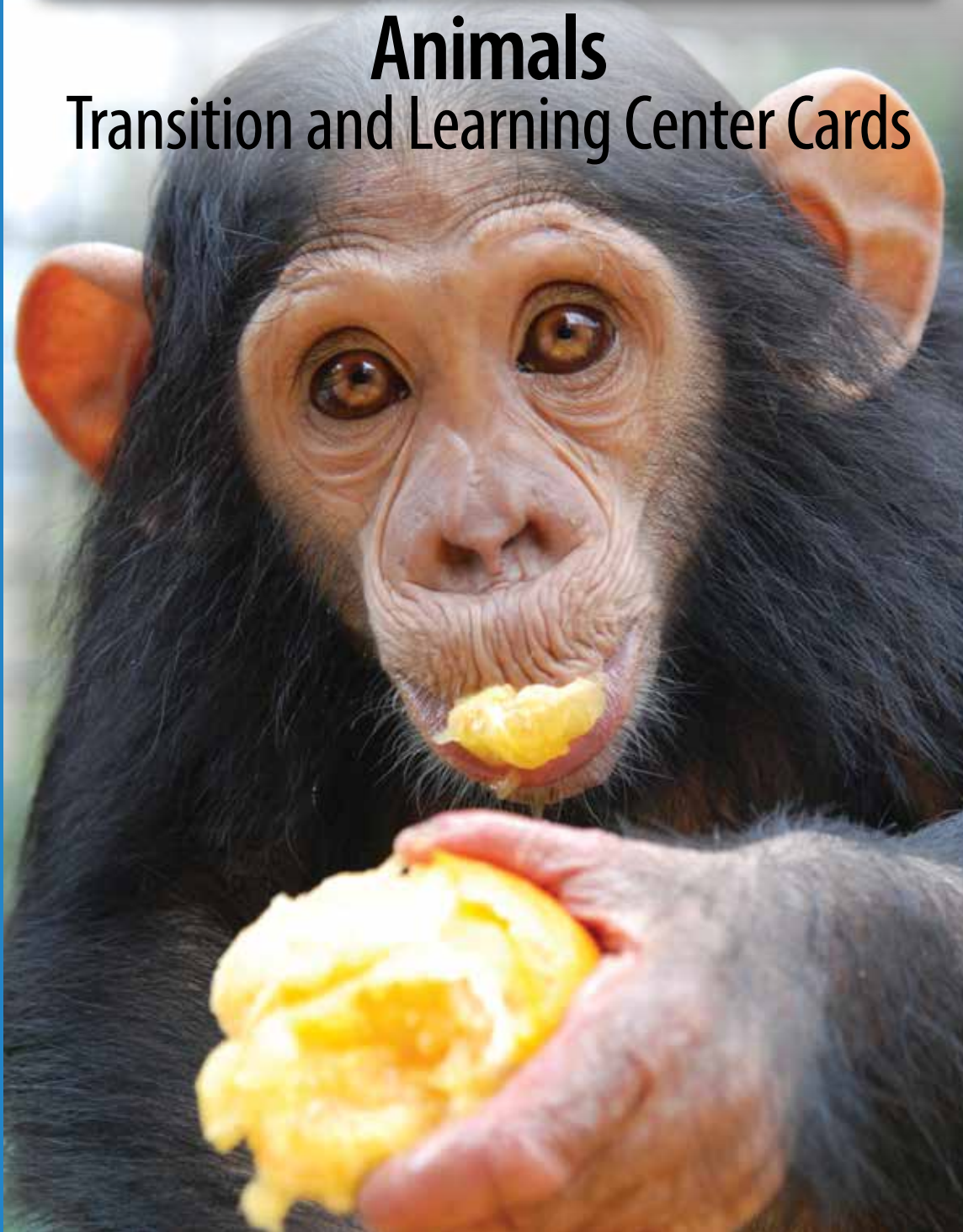




# Animals

## Transition and Learning Center Cards



## Creative Commons Licensing

This work is licensed under a Creative Commons Attribution-NonCommercial-ShareAlike 3.0 Unported License.



### You are free:

- to Share** — to copy, distribute and transmit the work
- to Remix** — to adapt the work

### Under the following conditions:

**Attribution** — You must attribute the work in the following manner:

*This work is based on an original work of the Core Knowledge® Foundation made available through licensing under a Creative Commons Attribution-NonCommercial-ShareAlike 3.0 Unported License. This does not in any way imply that the Core Knowledge Foundation endorses this work.*

**Noncommercial** — You may not use this work for commercial purposes.

**Share Alike** — If you alter, transform, or build upon this work, you may distribute the resulting work only under the same or similar license to this one.

### With the understanding that:

For any reuse or distribution, you must make clear to others the license terms of this work. The best way to do this is with a link to this web page:

<http://creativecommons.org/licenses/by-nc-sa/3.0/>

## CREDITS

*Every effort has been taken to trace and acknowledge copyrights. The editors tender their apologies for any accidental infringement where copyright has proved untraceable. They would be pleased to insert the appropriate acknowledgment in any subsequent edition of this publication. Trademarks and trade names are shown in this publication for illustrative purposes only and are the property of their respective owners. The references to trademarks and trade names given herein do not affect their validity.*

*All photographs are used under license from Shutterstock, Inc. unless otherwise noted.*

Copyright © 2013 Core Knowledge Foundation  
[www.coreknowledge.org](http://www.coreknowledge.org)

All Rights Reserved.

Core Knowledge Language Arts, Listening & Learning, and Tell It Again! are trademarks of the Core Knowledge Foundation.

Trademarks and trade names are shown in this book strictly for illustrative and educational purposes and are the property of their respective owners. References herein should not be regarded as affecting the validity of said trademarks and trade names.

# Animal Hospital







# Animal Hospital

**Roles:** veterinarian, veterinarian technician, groomer, receptionist, pet/animal owner, animal

## Suggested phrases to use:

- Let's take an X-ray of the bird's wing **so** we can see if it is hurt.
- This cat needs a bandage **because** her leg is broken.
- There are six **animals** at the animal hospital today.
- I am **examining** the horse's ear.
- What **happened** to this animal?

## Student conversations:

- Help students give each other single-step and multi step directions describing how to conduct exams and treat animals.
- Facilitate extended conversations about exams and helping animals.

## Facilitating emergent writing:

- Write appointments in appointment book.
- Label animal carriers.
- Write plans for treatment and medication.
- Write or draw X-rays to show where animals are hurt.

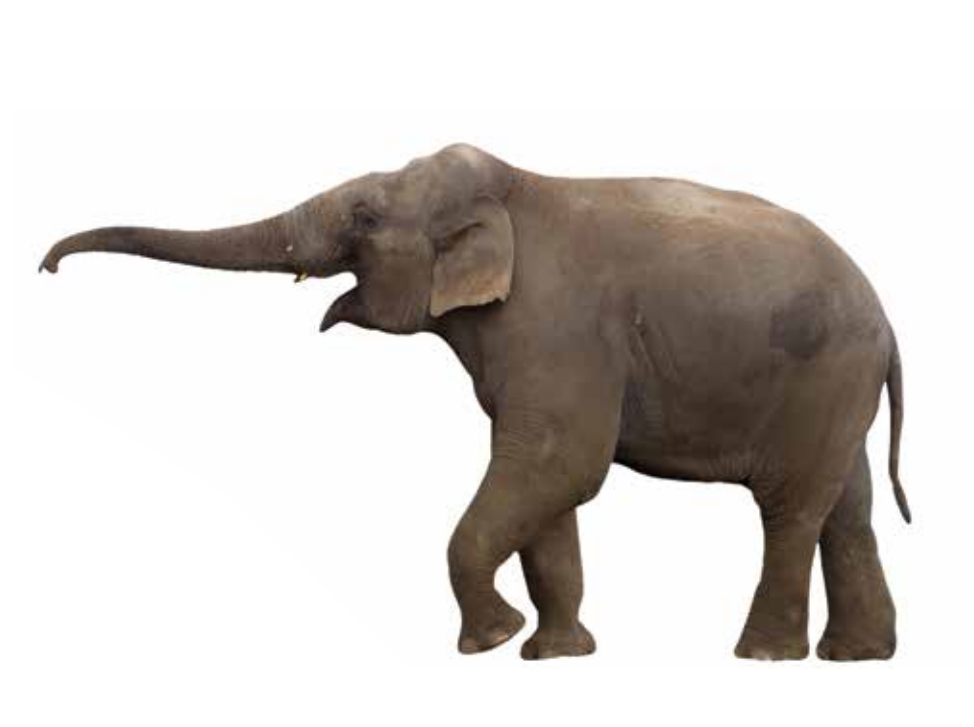
v



## Vocabulary

veterinarian	medicine
bandage	owner
vet tech	heart
groomer	ears
patient	tail
appointment	wing
X-ray	lungs
examine	paws
treatment	fur
	eyes





elephant (mammal)

**Animals**

**Animals** | TRANSITION CARDS  
PRESCHOOL

Core Knowledge Language Arts  
New York Edition PRESCHOOL



penguins (bird)

**Animals**

**Animals** | TRANSITION CARDS  
PRESCHOOL

Core Knowledge Language Arts  
New York Edition PRESCHOOL



shark (fish)

**Animals**

**Animals** | TRANSITION CARDS  
PRESCHOOL

Core Knowledge Language Arts  
New York Edition PRESCHOOL



toucan (bird)

**Animals**

**Animals** | TRANSITION CARDS  
PRESCHOOL

Core Knowledge Language Arts  
New York Edition PRESCHOOL







ladybug (insect)

**Animals**

**Animals** | TRANSITION CARDS  
PRESCHOOL

Core Knowledge Language Arts  
New York Edition PRESCHOOL



flamingo (bird)

**Animals**

**Animals** | TRANSITION CARDS  
PRESCHOOL

Core Knowledge Language Arts  
New York Edition PRESCHOOL



panda (mammal)

**Animals**

**Animals** | TRANSITION CARDS  
PRESCHOOL

Core Knowledge Language Arts  
New York Edition PRESCHOOL



eagle (bird)

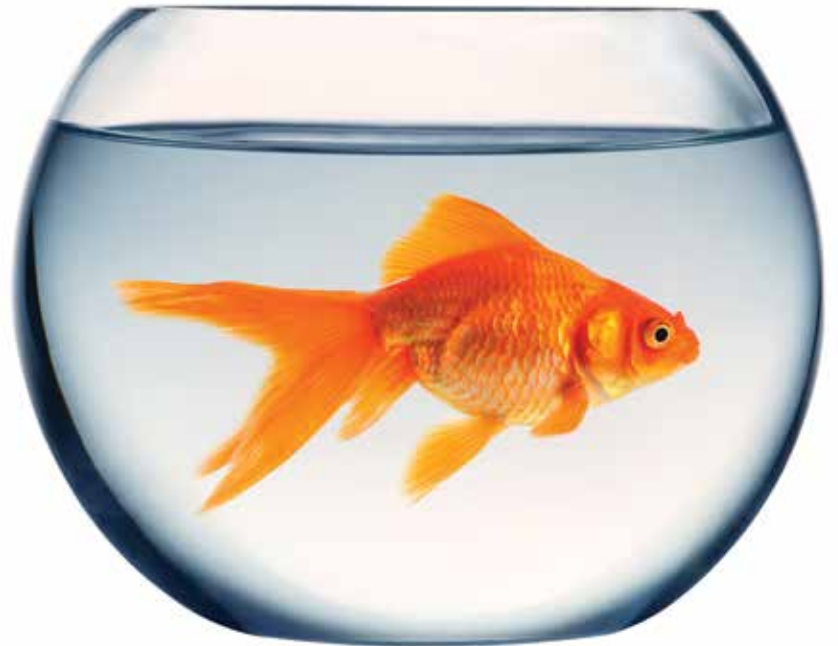
**Animals**

**Animals** | TRANSITION CARDS  
PRESCHOOL

Core Knowledge Language Arts  
New York Edition PRESCHOOL







turtle (other)

**Animals**

**Animals** | TRANSITION CARDS  
PRESCHOOL

Core Knowledge Language Arts  
New York Edition PRESCHOOL



duck (bird)

**Animals**

**Animals** | TRANSITION CARDS  
PRESCHOOL

Core Knowledge Language Arts  
New York Edition PRESCHOOL



goldfish (fish)

**Animals**

**Animals** | TRANSITION CARDS  
PRESCHOOL

Core Knowledge Language Arts  
New York Edition PRESCHOOL



clownfish (fish)

**Animals**

**Animals** | TRANSITION CARDS  
PRESCHOOL

Core Knowledge Language Arts  
New York Edition PRESCHOOL







butterfly (insect)

**Animals**

**Animals** | TRANSITION CARDS  
PRESCHOOL

Core Knowledge Language Arts  
New York Edition PRESCHOOL



dog (mammal)

**Animals**

**Animals** | TRANSITION CARDS  
PRESCHOOL

Core Knowledge Language Arts  
New York Edition PRESCHOOL



grasshopper (insect)

**Animals**

**Animals** | TRANSITION CARDS  
PRESCHOOL

Core Knowledge Language Arts  
New York Edition PRESCHOOL



beetle (insect)

**Animals**

**Animals** | TRANSITION CARDS  
PRESCHOOL

Core Knowledge Language Arts  
New York Edition PRESCHOOL





frog (other)

**Animals**

**Animals** | TRANSITION CARDS  
PRESCHOOL

Core Knowledge Language Arts  
New York Edition PRESCHOOL



cow (mammal)

**Animals**

**Animals** | TRANSITION CARDS  
PRESCHOOL

Core Knowledge Language Arts  
New York Edition PRESCHOOL



cat (mammal)

**Animals**

**Animals** | TRANSITION CARDS  
PRESCHOOL

Core Knowledge Language Arts  
New York Edition PRESCHOOL



raccoon (mammal)

**Animals**

**Animals** | TRANSITION CARDS  
PRESCHOOL

Core Knowledge Language Arts  
New York Edition PRESCHOOL





chicken (bird)

**Animals**

**Animals** | TRANSITION CARDS  
PRESCHOOL

Core Knowledge Language Arts  
New York Edition PRESCHOOL



rabbit (mammal)

**Animals**

**Animals** | TRANSITION CARDS  
PRESCHOOL

Core Knowledge Language Arts  
New York Edition PRESCHOOL



chimp (mammal)

**Animals**

**Animals** | TRANSITION CARDS  
PRESCHOOL

Core Knowledge Language Arts  
New York Edition PRESCHOOL



ant (insect)

**Animals**

**Animals** | TRANSITION CARDS  
PRESCHOOL

Core Knowledge Language Arts  
New York Edition PRESCHOOL







sheep (mammal)

**Animals**

**Animals** | TRANSITION CARDS  
PRESCHOOL

Core Knowledge Language Arts  
New York Edition PRESCHOOL



pig (mammal)

**Animals**

**Animals** | TRANSITION CARDS  
PRESCHOOL

Core Knowledge Language Arts  
New York Edition PRESCHOOL



snake (other)

**Animals**

**Animals** | TRANSITION CARDS  
PRESCHOOL

Core Knowledge Language Arts  
New York Edition PRESCHOOL



human (mammal)

**Animals**

**Animals** | TRANSITION CARDS  
PRESCHOOL

Core Knowledge Language Arts  
New York Edition PRESCHOOL



# CORE KNOWLEDGE LANGUAGE ARTS

## SERIES EDITOR-IN-CHIEF

E. D. Hirsch, Jr.

## PRESIDENT

Linda Bevilacqua

## EDITORIAL STAFF

Carolyn Gosse, Senior Editor - Preschool  
Khara Turnbull, Materials Development Manager  
Michelle L. Warner, Senior Editor - Listening & Learning

Mick Anderson  
Robin Blackshire  
Maggie Buchanan  
Paula Coyner  
Sue Fulton  
Sara Hunt  
Erin Kist  
Robin Luecke  
Rosie McCormick  
Cynthia Peng  
Liz Pettit  
Ellen Sadler  
Deborah Samley  
Lauren Simmons  
Diane Auger-Smith  
Sarah Zelinke

## DESIGN AND GRAPHICS STAFF

Scott Ritchie, Creative Director  
Kim Berrall  
Michael Donegan  
Liza Greene  
Matt Leech  
Bridget Moriarty  
Lauren Pack

## CONSULTING PROJECT MANAGEMENT SERVICES

ScribeConcepts.com

## ADDITIONAL CONSULTING SERVICES

Ang Blanchette  
Dorrit Green  
Carolyn Pinkerton

## ACKNOWLEDGMENTS

These materials are the result of the work, advice, and encouragement of numerous individuals over many years. Some of those singled out here already know the depth of our gratitude; others may be surprised to find themselves thanked publicly for help they gave quietly and generously for the sake of the enterprise alone. To helpers named and unnamed we are deeply grateful.

## CONTRIBUTORS TO EARLIER VERSIONS OF THESE MATERIALS

Susan B. Albaugh, Kazuko Ashizawa, Nancy Braier, Kathryn M. Cummings, Michelle De Groot, Diana Espinal, Mary E. Forbes, Michael L. Ford, Ted Hirsch, Danielle Knecht, James K. Lee, Diane Henry Leipzig, Martha G. Mack, Liana Mahoney, Isabel McLean, Steve Morrison, Juliane K. Munson, Elizabeth B. Rasmussen, Laura Tortorelli, Rachael L. Shaw, Sivan B. Sherman, Miriam E. Vidaver, Catherine S. Whittington, Jeannette A. Williams

We would like to extend special recognition to Program Directors Matthew Davis and Souzanne Wright who were instrumental to the early development of this program.

## SCHOOLS

We are truly grateful to the teachers, students, and administrators of the following schools for their willingness to field test these materials and for their invaluable advice: Capitol View Elementary, Challenge Foundation Academy (IN), Community Academy Public Charter School, Lake Lure Classical Academy, Lepanto Elementary School, New Holland Core Knowledge Academy, Paramount School of Excellence, Pioneer Challenge Foundation Academy, New York City PS 26R (The Carteret School), PS 30X (Wilton School), PS 50X (Clara Barton School), PS 96Q, PS 102X (Joseph O. Loretan), PS 104Q (The Bays Water), PS 214K (Michael Friedsam), PS 223Q (Lyndon B. Johnson School), PS 308K (Clara Cardwell), PS 333Q (Goldie Maple Academy), Sequoyah Elementary School, South Shore Charter Public School, Spartanburg Charter School, Steed Elementary School, Thomas Jefferson Classical Academy, Three Oaks Elementary, West Manor Elementary.

And a special thanks to the CKLA Pilot Coordinators Anita Henderson, Yasmin Lugo-Hernandez, and Susan Smith, whose suggestions and day-to-day support to teachers using these materials in their classrooms was critical.



